



# **PREMIUM PROJECT OF SOUTH DELHI**



**3 BHK**

Luxurious *Flat*



# ABOUT US

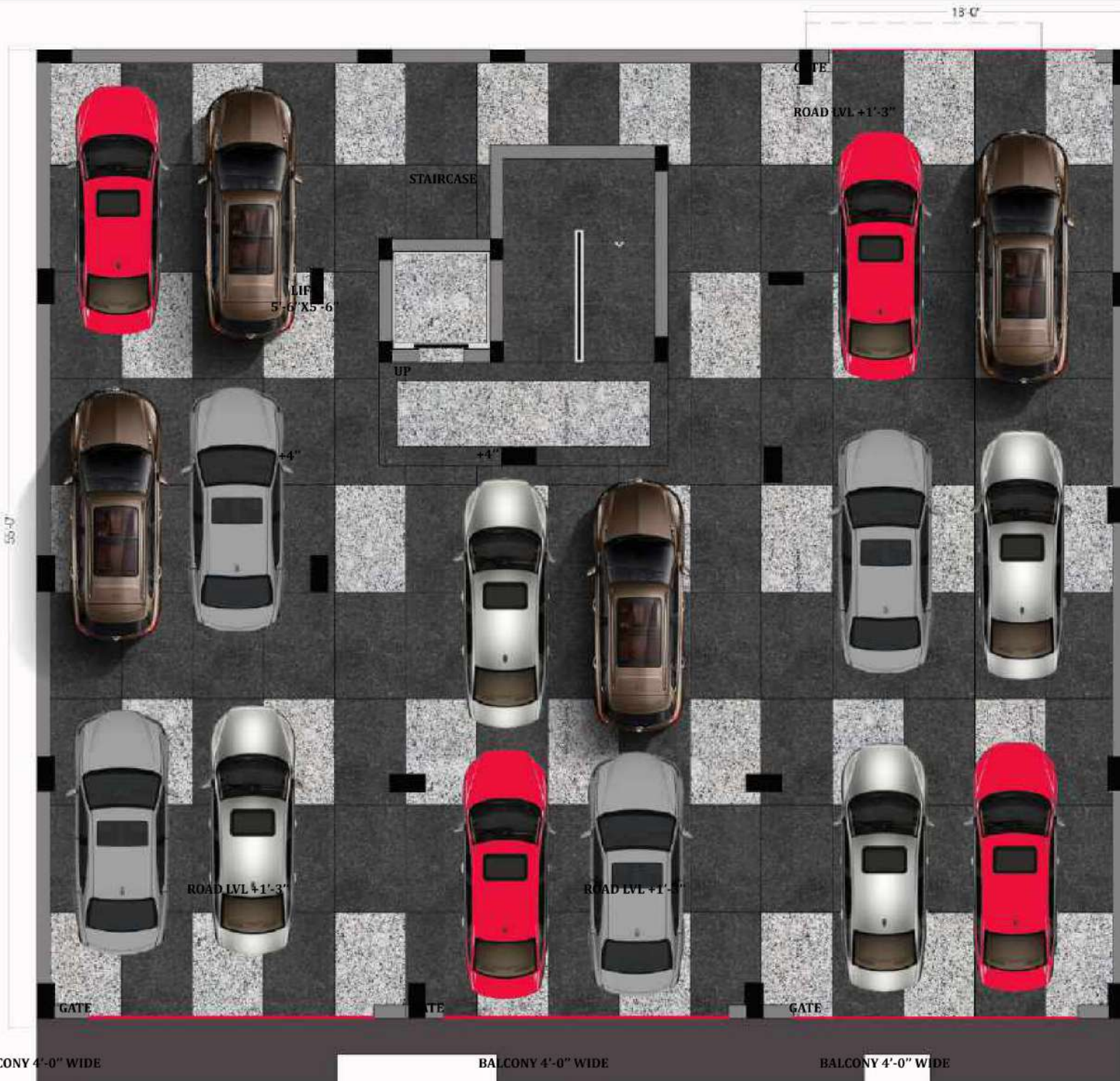
After The Tremendous Success Of  
Pavitra And Pavitra 2,we're Thrilled To  
Introduce Pavitra3! Get Ready For Luxurious  
3 Bhk Flats Packed With Lavish Amenities In Spacious  
125 Sq.yd. Rewriting The Definition Of Modern Living!



# Building Elevation







● BRANDED *Lift*

● GRANITE *Flooring*







# 3 BHK

Luxurious Flat

Size 125 Sq.Yd.

- 3 Bedrooms
- 2 Washroom
- Designer False Ceiling
- Highlighted Walls
- Fully Modular Kitchen
- Living Area

57'-9"





# Living Area

- Highlighted Walls
- Molding Work
- Designer False Ceiling

The Living Area Is The Heart Of Our Home, Where We Gather To Relax And Unwind.





# Bedrooms



Only Good  
Vibes

- Highlighted Walls
- Modular Wardrobe



- Molding Work
- Washroom





# Washrooms



- Vanity With  
Countertop Basin

- Shower Cubicle  
Glass Partition



# Modular Kitchen



- Fully Modular Kitchen
- False ceiling
- Overhead Storage
- Innotech Basket
- Profile light
- Double Bowl Sink

The heart of the home, where meals  
and memories are made.

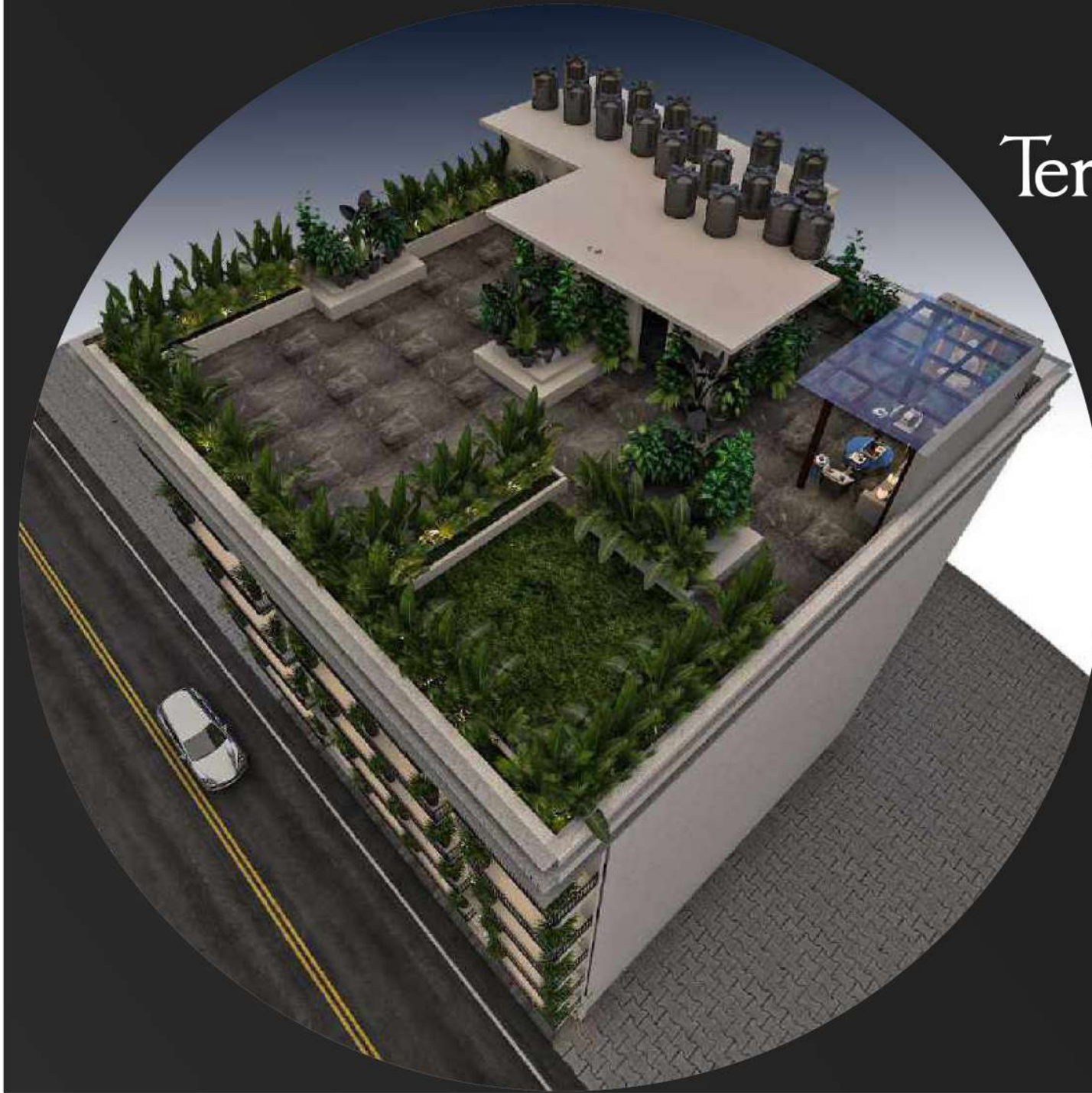


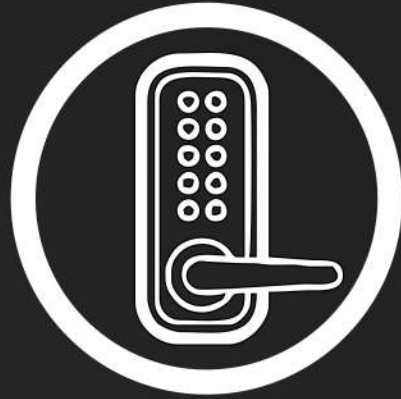




# Terrace Garden

Feel The Fresh Air





Branded  
Digital Locks



Fire Fighting  
System

## Safety & Security Systems

---



Guard Room



CCTV Cameras  
(All Common Areas)



# Location Advantages



 500 MTR. Sultanpur Metro Station

 25 Minutes Indira Gandhi International Airport

 2 km Chhatarpur Metro Station

 Schools Only 1 km

 Chhatarpur Mandir 2.5 Km.

 Hospital 2 km



Market Only 100 Mtr.



# Project Pavitra Highlights



Modular Kitchen



Geyser



Wardrobes



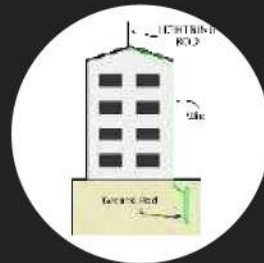
Chimney



CCTV Cameras



Motion Sensor  
Light



EARTHING



Terrace Garden



Branded Lift /Johnson / Equivalent



Branded Fittings



Car Parking With Reception



Branded Digital Locks





# Vehicle Charging Point



No Queues, No Interruption  
Charge At Your Own Home Station

## **STRUCTURE**

RCC Framed Structure - 20

Red Brick Work Or Light Weight Blocks & No. 1 Plastering

Water Proofing - Balcony, Kitchen, Toilet, Roof Top

## **JOINERIES**

Main Door Teak Wood And Equivalent With Chap Wood

Ornamental Flush Doors



## **DOORS**

Teak Wood Or Equivalent Frame

Design Flush Shutter With Veneer

Digital Lock





## **FLOORING**

High Gloss Digital Vitrified Tiles

Toilet Flooring Anti Skid Tiles

Common Area & Staircase - Granite Premium

Balcony Flooring Granite Stone

Kitchen Platform - Premium Granite Edge Polished

Car Park - Dual Colour Granite Premium



## **STAIRCASE RAILING**

Staircase - As per Architects Design

Balcony - As per Architects Design



## **COUNTER TOP**

Kitchen - Kitchen Counter top Premium Granite

Stainless Steel Sink With Drain Board





**Now or Never With Amazing Benefits**

**BOOKING OPEN**